



**កម្ពុជាធិបតេយ្យ**

**C.M.A.A**

**CAMBODIA MINE/ERW VICTIM INFORMATION SYSTEM**

**MONTHLY REPORT  
ON  
EXPLOSIVE ORDNANCE ACCIDENTS  
FOR MARCH 2026**

## Background

The Cambodia Mine/ERW Victim Information System (CMVIS) was established in 1994 by the Cambodian Red Cross with technical and financial support from Handicap International Belgium and UNICEF to provide systematic collection, analysis, interpretation, and dissemination of information about civilian and military casualties of landmines, unexploded ordnance, and other explosive remnants of war in Cambodia.

By the end of 2009, CMVIS had been completely transferred from the Cambodian Red Cross to the Cambodian Mine Action and Victim Assistance Authority for full management responsibility.

### Explosive Ordnance (EO) Accident and Casualty Information

#### 1- Total Casualties reported from January 1979 to March 2026

From January 1979 to March 2026, CMVIS officials recorded a total of 65137 EO casualties. All of the 65137 EO casualties:

- 51228 (79%) were mine casualties, and 13909 (21%) were ERW casualties.
- 19848 (30%) people were killed, 36186 (56%) people were injured, and 9103 (14%) people were amputated.
- 52740 (81%) casualties were men, 6132 (9%) casualties were boys (age<18), 4801 (8%) casualties were women, 1401 (2%) casualties were girls (age<18), and 63 (0%) casualties were unknowns.

#### 2- Accident Summary from January to March 2026

From January to March 2026, 6 EO accidents were provisionally recorded. This represents a 40% decrease from the 10 EO accidents reported in the same period in 2025. Of the 6 EO accidents, 2 were mine, and 4 were ERW accidents.

#### 3- Casualty Summary for January to March 2026

From January to March 2026, **12 EO** casualties were provisionally recorded. These figures represent a decrease of 8% compared with the 13 EO casualties reported in the same period of 2025.

All of the 12 EO casualties:

- 3 people were mine casualties, and 9 people were ERW casualties.
- 3 people were killed, 7 people were injured, and 2 people were amputated.
- 8 casualties were men, 3 casualties were boys (age<18), and 1 casualty was a girl (age<18).

#### 4- Accident Summary for March 2026

In March 2026, 3 EO accidents occurred in the provinces of Preah Vihear, Banteay Meanchey, and Kampong Thom, a 200% increase from the 1 accident reported in March 2025.

##### Information about the EO accident in March 2026

- o 2 ERW accidents happened on the riverbank and in the village.
- o 1 Mine accident happened in the RCAF position.

#### 5- Casualty Summary for March 2026

In March 2026, there were **6 EO casualties**, representing a significant **500% increase** compared to the 1 casualty reported in March 2025. Of the 6 EO casualties:

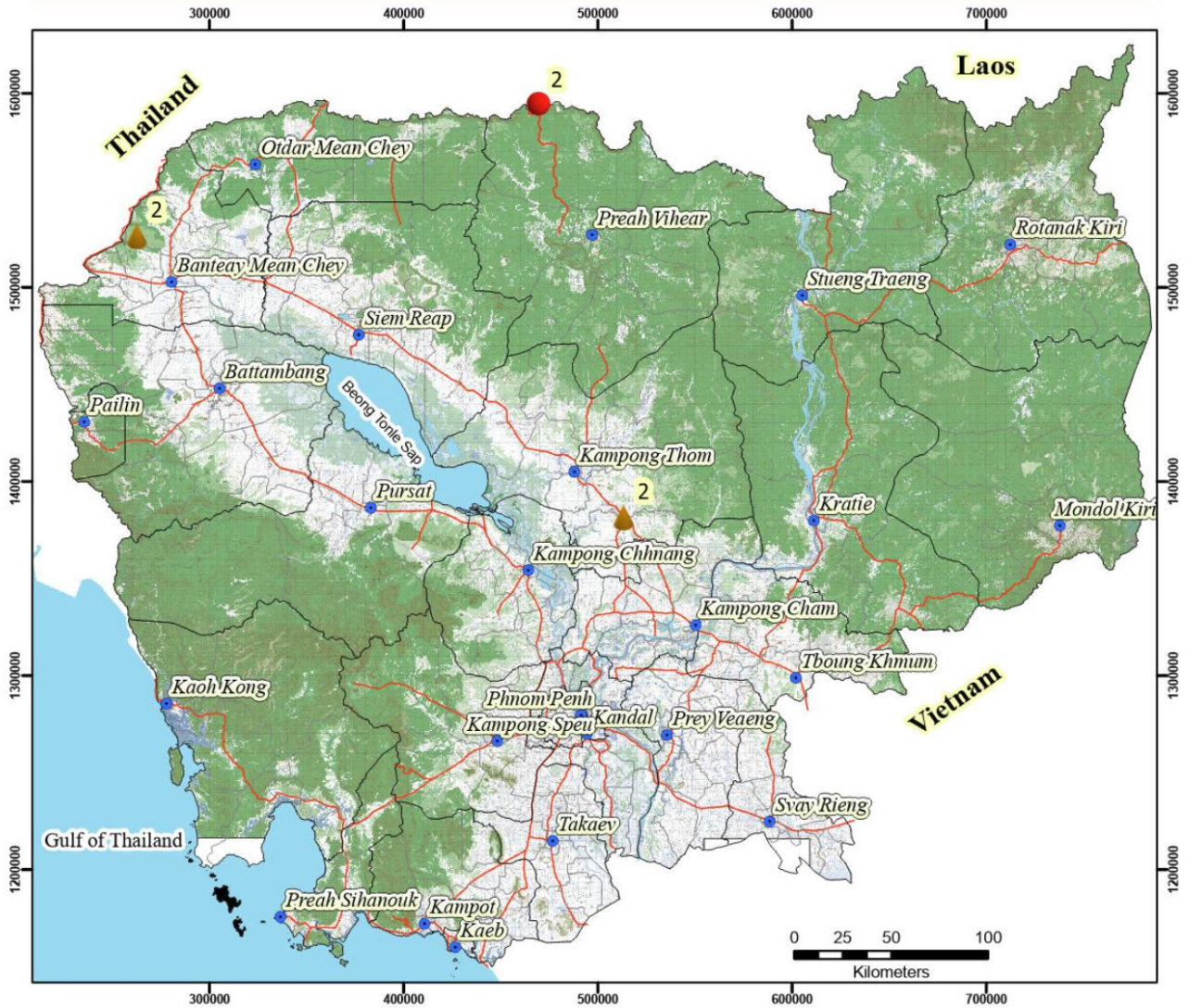
- 2 people were mine casualties, and 4 people were ERW casualties.
- 3 people were killed, 2 people were injured, and 1 person was amputated.
- The activities during the accidents were Handling ERW, which accounted for 2 casualties, By-stanerby activities, which accounted for 2 casualties, and Military activity, which accounted for 2 casualties.

#### 6- Impact of accident area for the period of January 2025 to March 2026 (51 casualties)

- 05 most affected provinces represent **78%** of total casualties.
- 10 of the districts most affected represent **68%** of total casualties.
- 10 more affected communes represent **62%** of total casualties.

For detailed information, please see page 6.

**Explosive Ordnance Accident location in March 2026**  
**Accident: 3 cases, Casualty: 6 people**



**Legend**

- ERW accident
- Mine accident
- Province Centers
- Province Boundary
- District Boundary
- Water surface
- National Road



Produced by CMVIS, Apr 2026

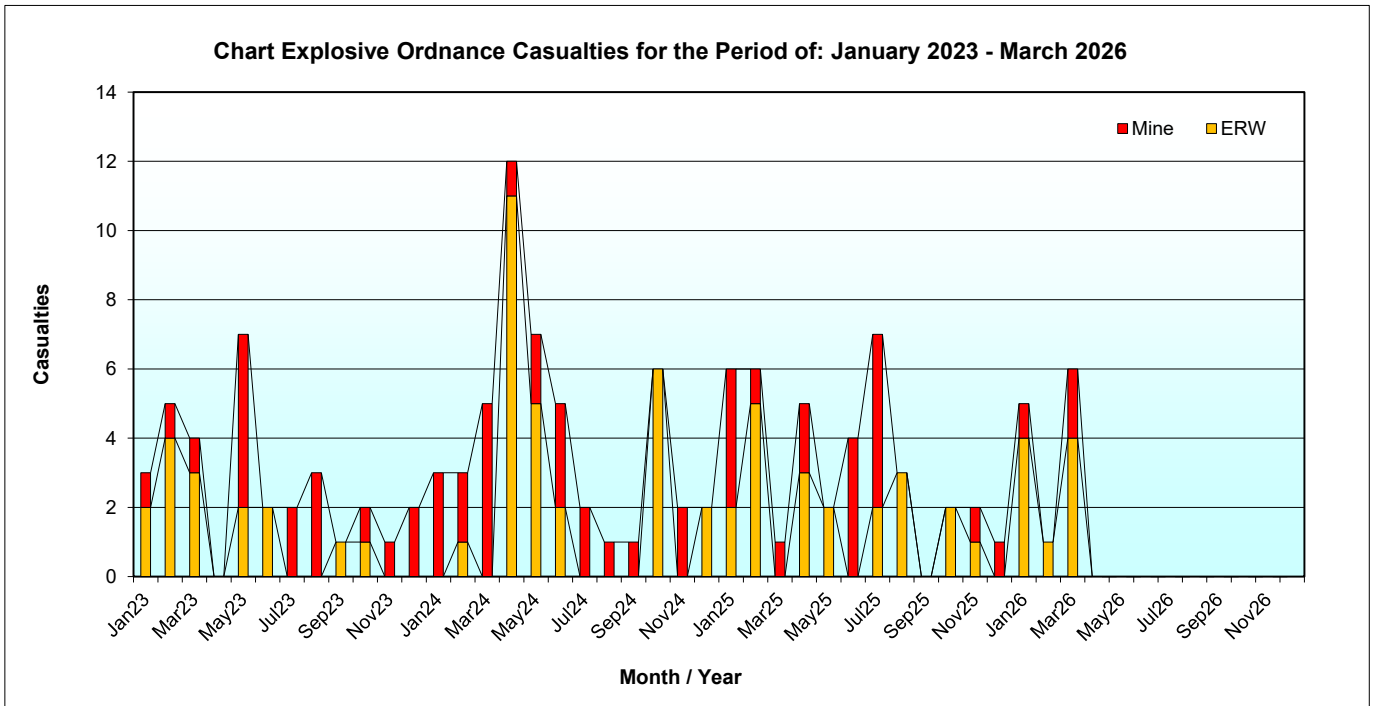
*Further analysis* and detailed EO casualty/accident information are available on request, including the production of risk maps and the provision of village-level data. For customized reports more suited to your organization’s needs, contact the CMVIS office: [ketya@cmaa.gov.kh](mailto:ketya@cmaa.gov.kh)

## Casualty Trend

### Report Explosive Ordnance Casualties for the Period of: January 2023 - March 2026

Year	Casualties by Month												Total
	Jan	Feb	Mar	April	May	Jun	July	Aug	Sept	Oct	Nov	Dec	
<b>2023</b>	<b>3</b>	<b>5</b>	<b>4</b>	<b>0</b>	<b>7</b>	<b>2</b>	<b>2</b>	<b>3</b>	<b>1</b>	<b>2</b>	<b>1</b>	<b>2</b>	<b>32</b>
<i>Running Total 2023</i>	3	8	12	12	19	21	23	26	27	29	30	32	
<b>2024</b>	<b>3</b>	<b>3</b>	<b>5</b>	<b>12</b>	<b>7</b>	<b>5</b>	<b>2</b>	<b>1</b>	<b>1</b>	<b>6</b>	<b>2</b>	<b>2</b>	<b>49</b>
<i>Running Total 2024</i>	3	6	11	23	30	35	37	38	39	45	47	49	
% change 2023 to 2024	0	-25	-8	92	58	67	61	46	44	55	57	53	
<b>2025</b>	<b>6</b>	<b>6</b>	<b>1</b>	<b>5</b>	<b>2</b>	<b>4</b>	<b>7</b>	<b>3</b>	<b>0</b>	<b>2</b>	<b>2</b>	<b>1</b>	<b>39</b>
monthly change +/- from 2024	3	3	-4	-7	-5	-1	5	2	-1	-4	0	-1	
monthly change % from 2024	100	100	-80	-58	-71	-20	250	200	-100	-67	0	-50	
<i>Running Total 2025</i>	<b>6</b>	<b>12</b>	<b>13</b>	<b>18</b>	<b>20</b>	<b>24</b>	<b>31</b>	<b>34</b>	<b>34</b>	<b>36</b>	<b>38</b>	<b>39</b>	
% change 2024 to 2025	100	100	18	-22	-33	-31	-16	-11	-13	-20	-19	-20	
<b>2026</b>	<b>5</b>	<b>1</b>	<b>6</b>										<b>12</b>
monthly change +/- from 2025	-1	-5	5										
monthly change % from 2025	-17	-83	500										
<i>Running Total 2026</i>	<b>5</b>	<b>6</b>	<b>12</b>										
% change 2025 to 2026	-17	-50	-8										

Note: Casualty figures for prior months are continually updated and verified as a part of the on-going data collection process.

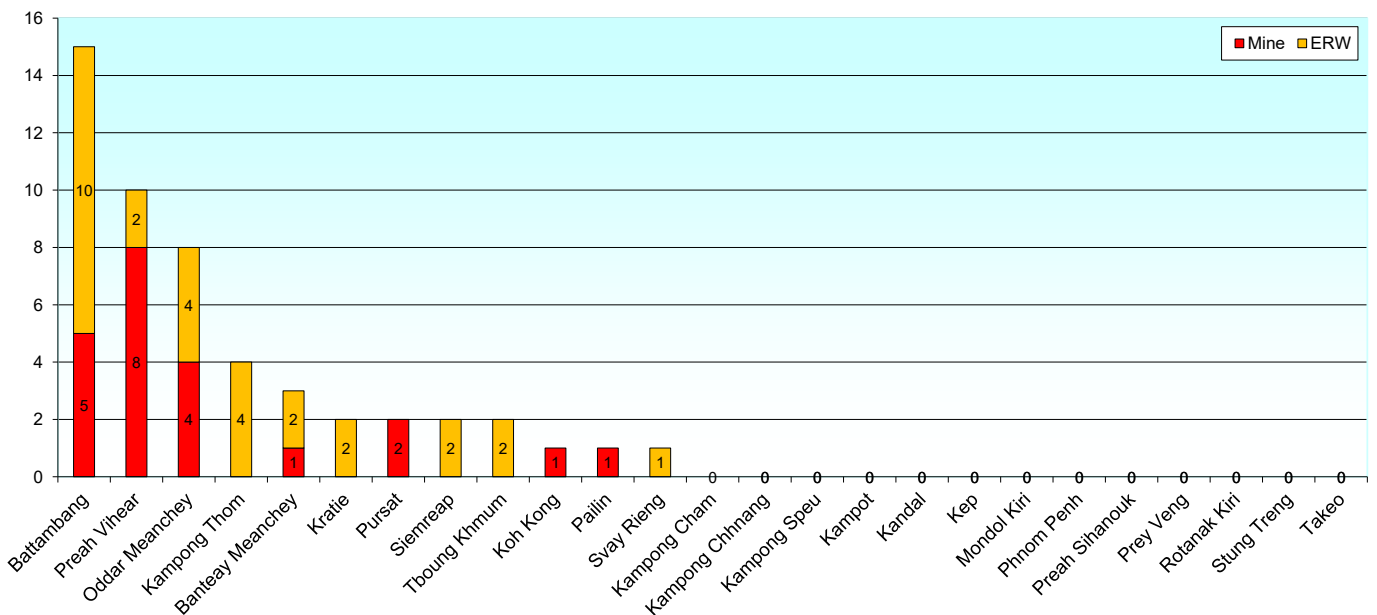


### Monthly Explosive Ordnance Accident Casualties: Jan 2025 - Mar 2026

Provinces ranked by Total Explosive Ordnance Casualties for 2025 - 2026

Province	2025												2026												Total 2025-2026	Cum. Total	% of Total	Cum. %		
	Jan-25	Feb-25	Mar-25	Apr-25	May-25	Jun-25	Jul-25	Aug-25	Sep-25	Oct-25	Nov-25	Dec-25	Jan-26	Feb-26	Mar-26	Apr-26	May-26	Jun-26	Jul-26	Aug-26	Sep-26	Oct-26	Nov-26	Dec-26						
Battambang	3	0	0	3	0	0	3	3	0	0	0	1	13	1	1	0	0	0	0	0	0	0	0	0	0	2	15	15	29.4	29
Preah Vihear	0	0	1	0	0	1	4	0	0	2	0	0	8	0	0	2	0	0	0	0	0	0	0	0	0	2	10	25	19.6	49
Oddar Meanchey	2	0	0	1	0	1	0	0	0	0	0	0	4	4	0	0	0	0	0	0	0	0	0	0	0	4	8	33	15.7	65
Kampong Thom	0	2	0	0	0	0	0	0	0	0	0	0	2	0	0	2	0	0	0	0	0	0	0	0	0	2	4	37	7.8	73
Banteay Meanchey	0	0	0	0	0	0	0	0	0	0	0	1	1	0	0	2	0	0	0	0	0	0	0	0	0	2	3	40	5.9	78
Kratie	1	0	0	0	1	0	0	0	0	0	0	0	2	0	0	0	0	0	0	0	0	0	0	0	0	0	2	42	3.9	82
Tboung Khmum	0	1	0	0	0	0	0	0	0	0	0	1	2	0	0	0	0	0	0	0	0	0	0	0	0	0	2	44	3.9	86
Pursat	0	1	0	0	0	1	0	0	0	0	0	0	2	0	0	0	0	0	0	0	0	0	0	0	0	0	2	46	3.9	90
Siemreap	0	2	0	0	0	0	0	0	0	0	0	0	2	0	0	0	0	0	0	0	0	0	0	0	0	0	2	48	3.9	94
Koh Kong	0	0	0	1	0	0	0	0	0	0	0	0	1	0	0	0	0	0	0	0	0	0	0	0	0	0	1	49	2	96
Svay Rieng	0	0	0	0	1	0	0	0	0	0	0	0	1	0	0	0	0	0	0	0	0	0	0	0	0	0	1	50	2	98
Pailin	0	0	0	0	0	1	0	0	0	0	0	0	1	0	0	0	0	0	0	0	0	0	0	0	0	0	1	51	2	100
Kampong Chhnang	0	0	0	0	0	0	0	0	0	0	0	0	0	0	0	0	0	0	0	0	0	0	0	0	0	0	0	51	0	100
Kampot	0	0	0	0	0	0	0	0	0	0	0	0	0	0	0	0	0	0	0	0	0	0	0	0	0	0	0	51	0	100
Kampong Cham	0	0	0	0	0	0	0	0	0	0	0	0	0	0	0	0	0	0	0	0	0	0	0	0	0	0	0	51	0	100
Kandal	0	0	0	0	0	0	0	0	0	0	0	0	0	0	0	0	0	0	0	0	0	0	0	0	0	0	0	51	0	100
Kampong Speu	0	0	0	0	0	0	0	0	0	0	0	0	0	0	0	0	0	0	0	0	0	0	0	0	0	0	0	51	0	100
Mondol Kiri	0	0	0	0	0	0	0	0	0	0	0	0	0	0	0	0	0	0	0	0	0	0	0	0	0	0	0	51	0	100
Prey Veng	0	0	0	0	0	0	0	0	0	0	0	0	0	0	0	0	0	0	0	0	0	0	0	0	0	0	0	51	0	100
Rotanak Kiri	0	0	0	0	0	0	0	0	0	0	0	0	0	0	0	0	0	0	0	0	0	0	0	0	0	0	0	51	0	100
Preah Sihanouk	0	0	0	0	0	0	0	0	0	0	0	0	0	0	0	0	0	0	0	0	0	0	0	0	0	0	0	51	0	100
Stung Treng	0	0	0	0	0	0	0	0	0	0	0	0	0	0	0	0	0	0	0	0	0	0	0	0	0	0	0	51	0	100
Takeo	0	0	0	0	0	0	0	0	0	0	0	0	0	0	0	0	0	0	0	0	0	0	0	0	0	0	0	51	0	100
Kep	0	0	0	0	0	0	0	0	0	0	0	0	0	0	0	0	0	0	0	0	0	0	0	0	0	0	0	51	0	100
Phnom Penh	0	0	0	0	0	0	0	0	0	0	0	0	0	0	0	0	0	0	0	0	0	0	0	0	0	0	0	51	0	100
<b>TOTAL</b>	<b>6</b>	<b>6</b>	<b>1</b>	<b>5</b>	<b>2</b>	<b>4</b>	<b>7</b>	<b>3</b>	<b>0</b>	<b>2</b>	<b>2</b>	<b>1</b>	<b>39</b>	<b>5</b>	<b>1</b>	<b>6</b>	<b>0</b>	<b>0</b>	<b>0</b>	<b>0</b>	<b>0</b>	<b>0</b>	<b>0</b>	<b>0</b>	<b>0</b>	<b>0</b>	<b>12</b>	<b>51</b>		

Explosive Ordnance Casualties by Province for 2025-2026



### **5 Most Affected Provinces for Explosive Ordnance Casualties**

#### **Ranked by Total Casualties**

Jan2025 - Mar2026

Rank	Province	Mine Casualties	ERW Casualties	Total Casualties	Cumulative Total
1	Battambang	5	10	15	15
2	Preah Vihear	8	2	10	25
3	Oddar Meanchey	4	4	8	33
4	Kampong Thom	0	4	4	37
5	Banteay Meanchey	1	2	3	40

### **10 Most Affected Districts for Explosive Ordnance Casualties**

#### **Ranked by Total Casualties**

Jan2025 - Mar2026

Rank	District	Province	Mine Casualties	ERW Casualties	Total Casualties	Cumulative Total
1	Choam Khsant	Preah Vihear	8	2	10	10
2	Banan	Battambang	0	4	4	14
3	Banteay Ampil	Oddar Meanchey	0	4	4	18
4	Trapeang Prasat	Oddar Meanchey	3	0	3	21
5	Samlout	Battambang	0	3	3	24
6	Sampov Lun	Battambang	3	0	3	27
7	Stoung	Kampong Thom	0	2	2	29
8	Svay Chek	Banteay Meanchey	0	2	2	31
9	Aek Phnum	Battambang	0	2	2	33
10	Svay Leu	Siemreap	0	2	2	35

### **10 Most Affected Communes for Explosive Ordnance Casualties**

#### **Ranked by Total Casualties**

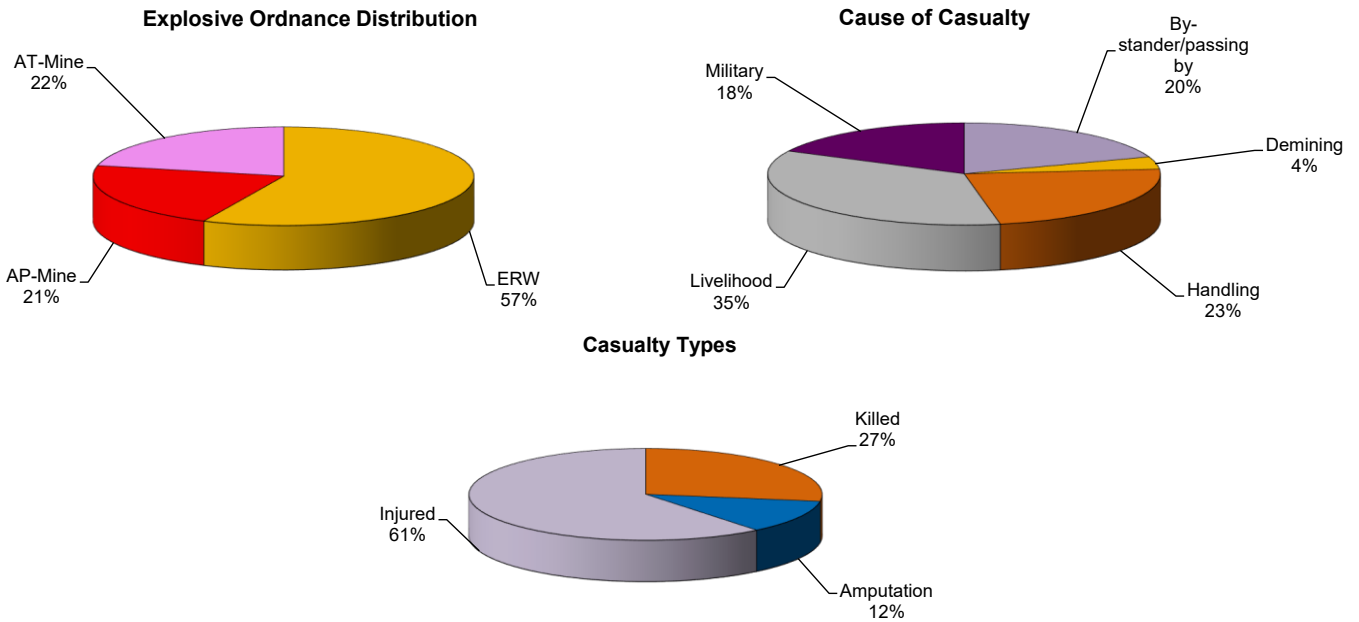
Jan2025 - Mar2026

Rank	Commune	District	Province	Mine Casualties	ERW Casualties	Total Casualties	Cum. Total
1	Sror Aem	Choam Khsant	Preah Vihear	4	2	6	6
2	Chaeng Mean Chey	Banan	Battambang	0	4	4	10
3	Morokot	Choam Khsant	Preah Vihear	4	0	4	14
4	Kouk Khpos	Banteay Ampil	Oddar Meanchey	0	4	4	18
5	Ta Sda	Sampov Lun	Battambang	3	0	3	21
6	Ou Samrel	Samlout	Battambang	0	3	3	24
7	Ta Siem	Svay Leu	Siemreap	0	2	2	26
8	Popok	Stoung	Kampong Thom	0	2	2	28
9	Kampong Thma	Santuk	Kampong Thom	0	2	2	30
10	Thma Da	Veal Veang	Pursat	2	0	2	32

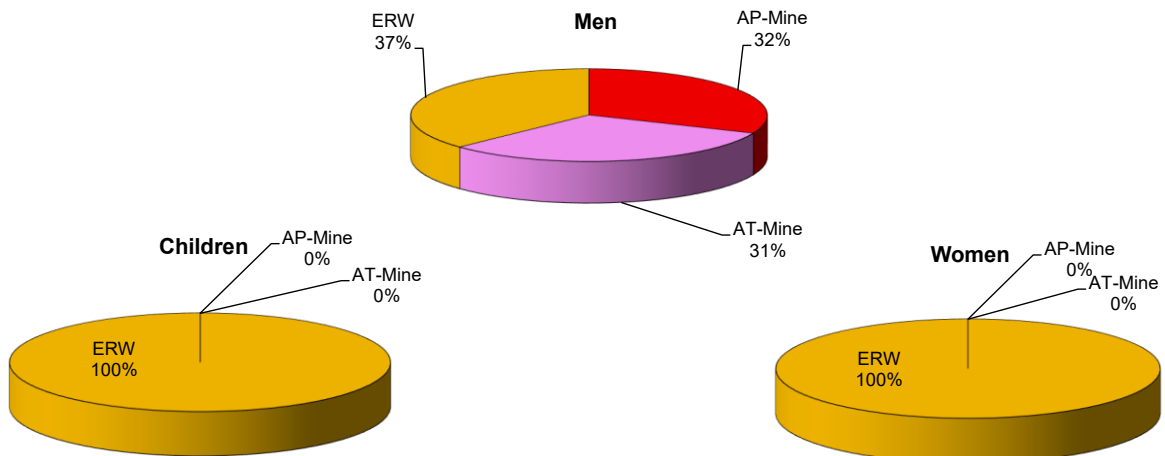
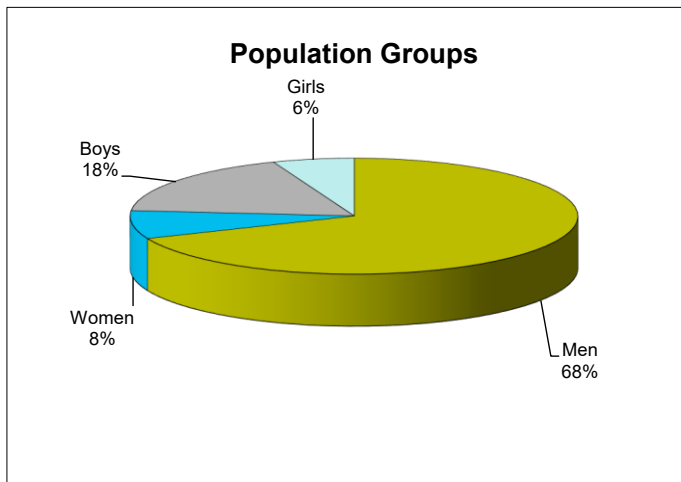
## OVERVIEW OF EXPLOSIVE ORDNANCE ACCIDENTS

Jan 2025 - Mar 2026

Total Number of Casualties during Reporting Period: 51



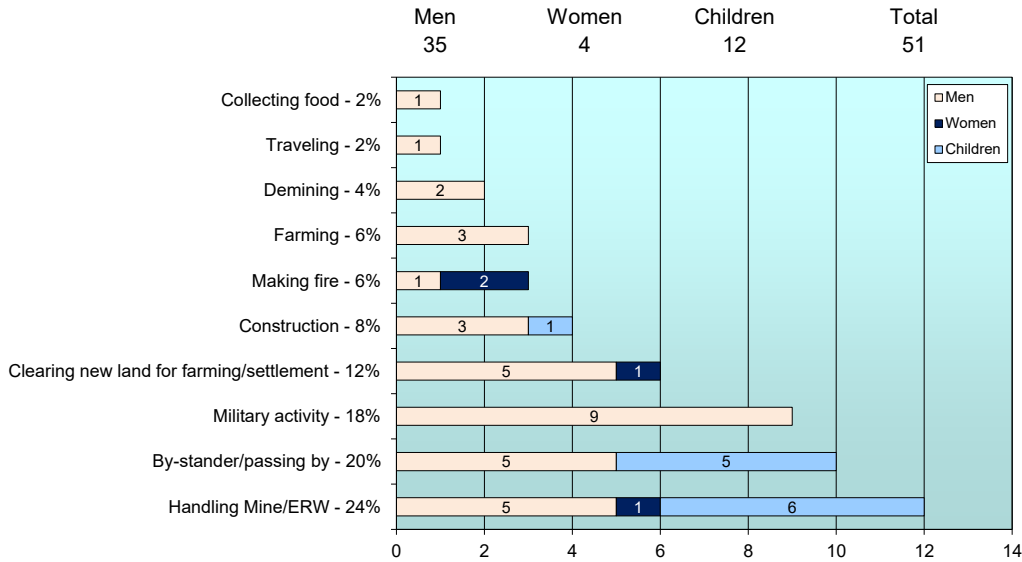
### EXPLOSIVE ORDNANCE ACCIDENT OVERVIEW



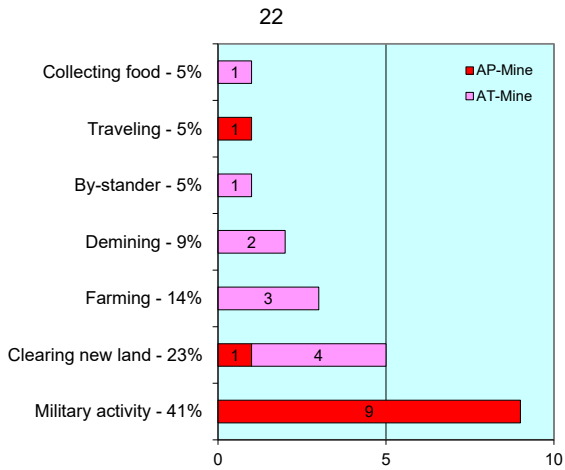
Jan 2025 - Mar 2026

Number of accidents during Reporting Period: **51**

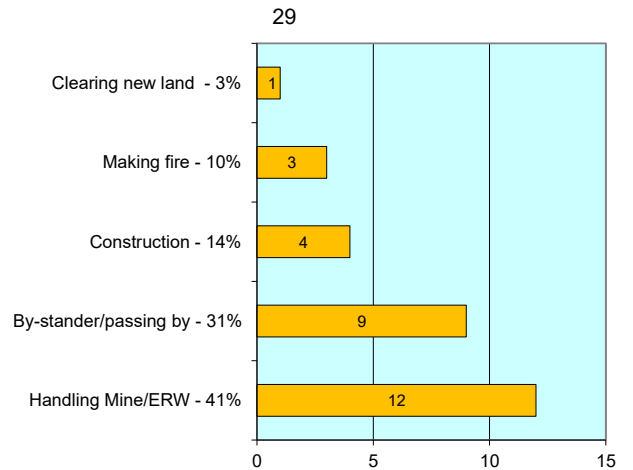
**Cause of Accident by Total Population Group**



**Activities - Mines**

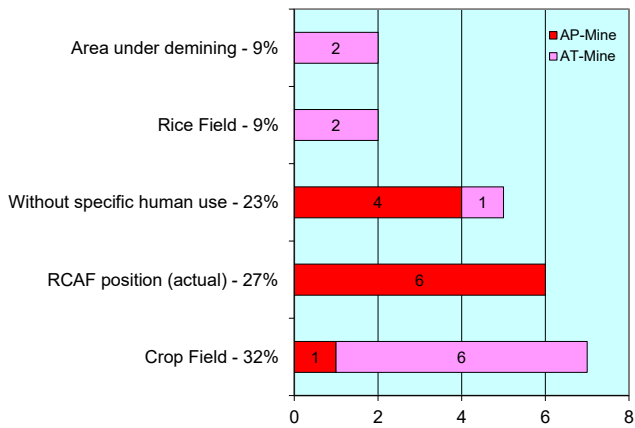


**Activities - ERW**



**Explosive Ordnance Accidents by Terrain Type**

**Terrain - Mines**



**Terrain - ERW**

