



អង្គការមីន

C.M.A.A

CAMBODIA MINE/ERW VICTIM INFORMATION SYSTEM

**MONTHLY REPORT
ON
EXPLOSIVE ORDNANCE ACCIDENTS
FOR DECEMBER 2024**

Background

The Cambodia Mine/ERW Victim Information System (CMVIS) was established in 1994 by the Cambodian Red Cross with technical and financial support from Handicap International Belgium and UNICEF to provide systematic collection, analysis, interpretation, and dissemination of information about civilian and military casualties of landmines, unexploded ordnance, and other explosive remnants of war in Cambodia.

By the end of 2009, CMVIS had been completely transferred from the Cambodian Red Cross to the Cambodian Mine Action and Victim Assistance Authority for full management responsibility.

Explosive Ordnance (EO) Accident and Casualty Information

1- Total Casualties reported from January 1979 to December 2024

From January 1979 to December 2024, a total of **65086 EO casualties** were recorded by CMVIS officials. All of the 65086 EO casualties:

- 51206 (79%) were mine casualties, and 13880 (21%) were ERW casualties.
- 19834 (30%) people were killed, 36156 (56%) people were injured, and 9096 (14%) people were amputated.
- 52705 (81%) casualties were men, 6123 (9%) casualties were boys (age<18), 4797 (8%) casualties were women, 1398 (2%) casualties were girls (age<18), and 63 (0%) casualties were unknowns.

2- Accident Summary from January to December 2024

From January to December 2024, 30 EO accidents were provisionally recorded. This figure is an increase of 3% compared with the 29 EO accidents reported in the same period of 2023. Of the 30 EO accidents, 19 were mine and 11 were ERW accidents.

3- Casualty Summary for January to December 2024

From January to December 2024, 49 EO casualties were provisionally recorded. These figures represent an increase of 53% compared with the 32 EO casualties reported in the same period of 2023.

All of the 49 EO casualties:

- 22 people were mine casualties, and 27 people were ERW casualties.
- 12 people were killed, 29 people were injured, and 8 people were amputated.
- 30 casualties were men, 11 casualties were boys (age<18), 3 casualties were women, and 5 casualties were girls (age<18).

4- Accident Summary for December 2024

In December 2024, 1 EO accident occurred in Koh Kong province, an increase of 50% compared with the 2 accidents reported in December 2023.

Information about the EO accident in December 2024

- o The accident caused by ERW happened on the land without a specific human use area.

5- Casualty Summary for December 2024

In December 2024, there were **2 EO casualties**. The figure is the same as the 2 casualties reported in December 2023. Of the 2 EO casualties:

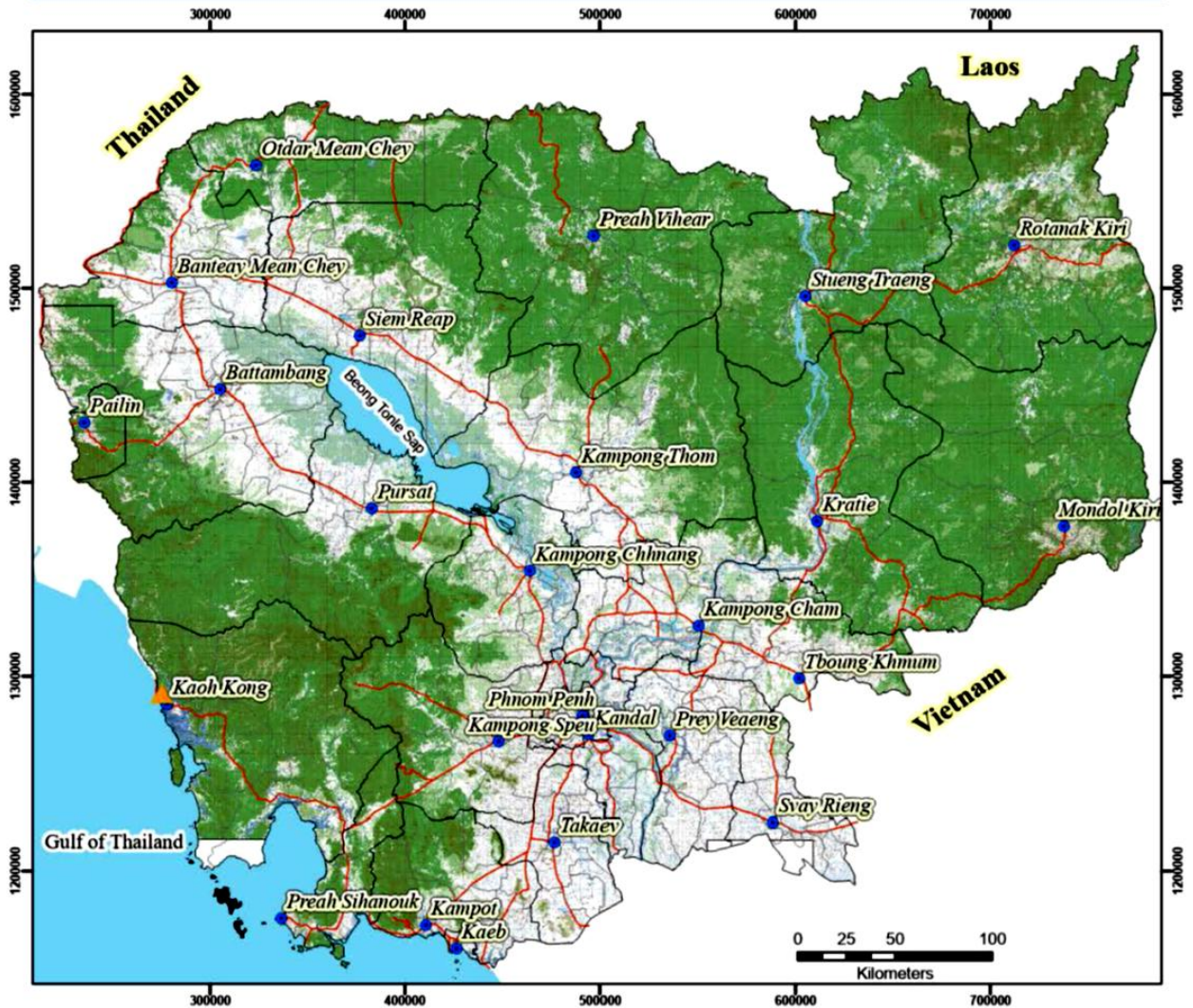
- 2 casualties were men, who were 1 injured, and 1 killed by ERW incident.
- The activity at the time of the accident was as follows: Handling ERW, which accounted for 2 casualties.

6- Impact of accident area for the period of January 2023 to December 2024 (81 casualties)

- 05 most affected provinces represent **53%** of total casualties.
- 10 of the districts most affected represent **63%** of total casualties.
- 10 more affected communes represent **52%** of total casualties.

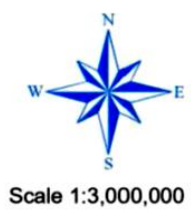
For detailed information, please see on page 6.

Explosive Ordnance Accident location in December 2024
Accident: 1 case, Casualty: 2 people



Legend

- ▲ ERW accident
- Province Centers
- Province Boundary
- District Boundary
- Water surface
- National Road



Produced by CMVIS, Jan 2025

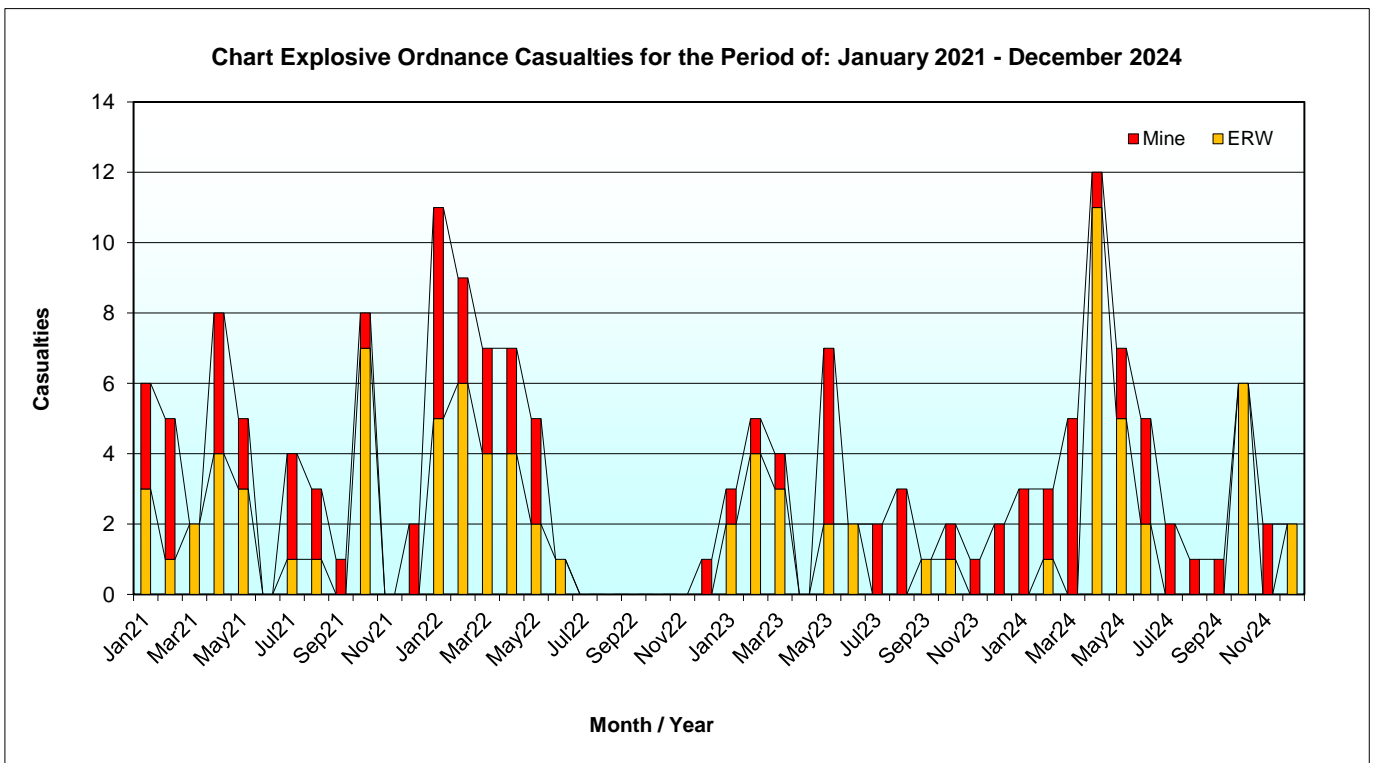
Further analysis and detailed EO casualty/accident information are available on request, including the production of risk maps and the provision of village-level data. For customized reports more suited to your organization’s needs, contact the CMVIS office: ketva@cmaa.gov.kh

Casualty Trend

Report Explosive Ordnance Casualties for the Period of: January 2021 - December 2024

| Year | Casualties by Month | | | | | | | | | | | | Total |
|------------------------------|---------------------|----------|-----------|-----------|-----------|-----------|-----------|-----------|-----------|-----------|-----------|-----------|-----------|
| | Jan | Feb | Mar | April | May | Jun | July | Aug | Sept | Oct | Nov | Dec | |
| 2021 | 6 | 5 | 2 | 8 | 5 | 0 | 4 | 3 | 1 | 8 | 0 | 2 | 44 |
| <i>Running Total 2021</i> | 6 | 11 | 13 | 21 | 26 | 26 | 30 | 33 | 34 | 42 | 42 | 44 | |
| 2022 | 11 | 9 | 7 | 7 | 5 | 1 | 0 | 0 | 0 | 0 | 0 | 1 | 41 |
| <i>Running Total 2022</i> | 11 | 20 | 27 | 34 | 39 | 40 | 40 | 40 | 40 | 40 | 40 | 41 | |
| % change 2021 to 2022 | 83 | 82 | 108 | 62 | 50 | 54 | 33 | 21 | 18 | -5 | -5 | -7 | |
| 2023 | 3 | 5 | 4 | 0 | 7 | 2 | 2 | 3 | 1 | 2 | 1 | 2 | 32 |
| monthly change +/- from 2022 | -8 | -4 | -3 | -7 | 2 | 1 | 2 | 3 | 1 | 2 | 1 | 1 | |
| monthly change % from 2022 | -73 | -44 | -43 | -100 | 40 | 100 | 100 | 100 | 100 | 100 | 100 | 100 | |
| <i>Running Total 2023</i> | 3 | 8 | 12 | 12 | 19 | 21 | 23 | 26 | 27 | 29 | 30 | 32 | |
| % change 2022 to 2023 | -73 | -60 | -56 | -65 | -51 | -48 | -43 | -35 | -33 | -28 | -25 | -22 | |
| 2024 | 3 | 3 | 5 | 12 | 7 | 5 | 2 | 1 | 1 | 6 | 2 | 2 | 49 |
| monthly change +/- from 2023 | 0 | -2 | 1 | 12 | 0 | 3 | 0 | -2 | 0 | 4 | 1 | 0 | |
| monthly change % from 2023 | 0 | -40 | 25 | 100 | 0 | 150 | 0 | -67 | 0 | 200 | 100 | 0 | |
| <i>Running Total 2024</i> | 3 | 6 | 11 | 23 | 30 | 35 | 37 | 38 | 39 | 45 | 47 | 49 | |
| % change 2023 to 2024 | 0 | -25 | -8 | 92 | 58 | 67 | 61 | 46 | 44 | 55 | 57 | 53 | |

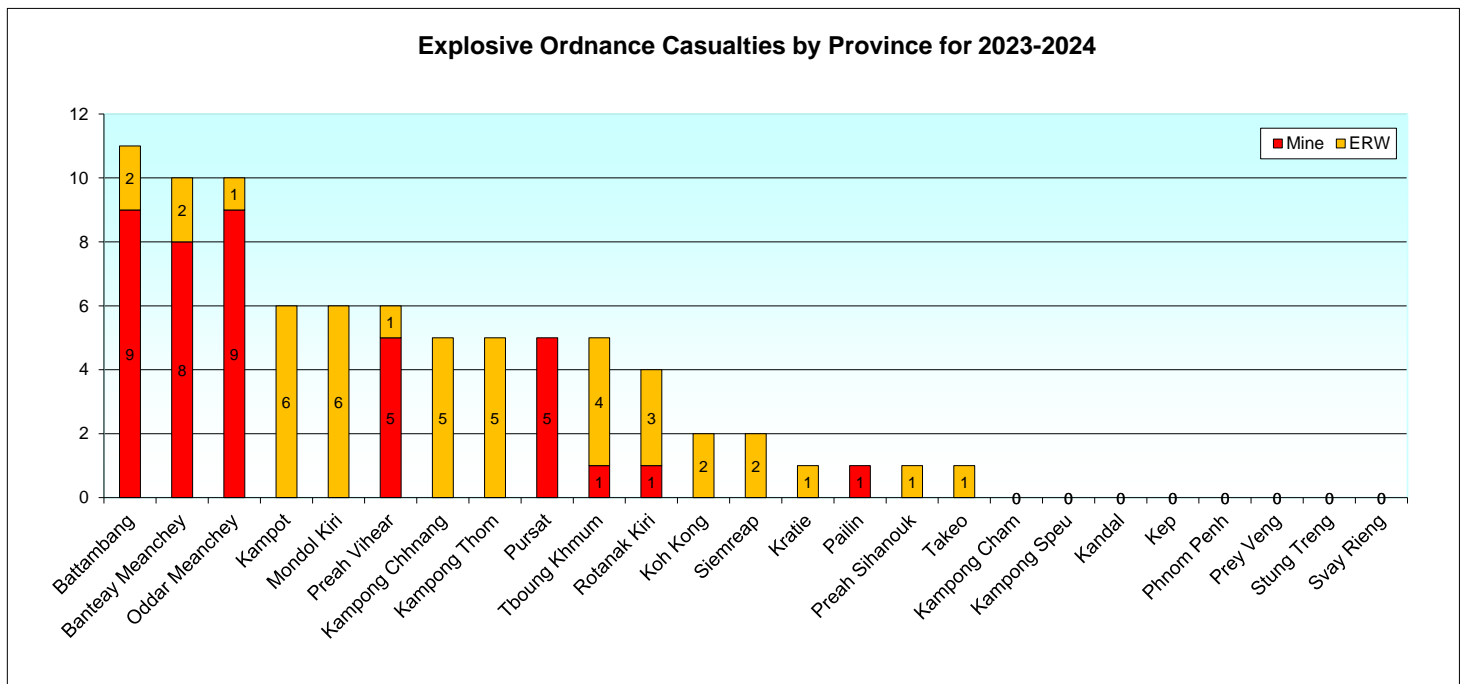
Note: Casualty figures for prior months are continually updated and verified as a part of the on-going data collection process.



Monthly Explosive Ordnance Accident Casualties: Jan2023 - Dec2024

Provinces ranked by Total Explosive Ordnance Casualties for 2023 - 2024

| Province | Jan-23 | Feb-23 | Mar-23 | Apr-23 | May-23 | Jun-23 | Jul-23 | Aug-23 | Sep-23 | Oct-23 | Nov-23 | Dec-23 | Total 2023 | | | | | | | | | | | | Total 2024 | | | | | | | | | | | | Total 2023-2024 | Cum. Total | % of Total | Cum. % |
|------------------|----------|----------|----------|----------|----------|----------|----------|----------|----------|----------|----------|----------|------------|----------|----------|----------|-----------|----------|----------|----------|----------|----------|----------|----------|------------|-----------|-----------|-----|-----|-----|-----|-----|-----|------|-----|--|--------------------|------------|------------|--------|
| | No. | No. | No. | No. | No. | No. | No. | No. | No. | No. | No. | No. | No. | No. | No. | No. | No. | No. | No. | No. | No. | No. | No. | No. | No. | No. | No. | No. | No. | No. | No. | No. | No. | | | | | | | |
| Battambang | 0 | 0 | 0 | 0 | 2 | 0 | 0 | 1 | 1 | 0 | 0 | 2 | 6 | 0 | 1 | 2 | 0 | 0 | 0 | 0 | 0 | 1 | 0 | 0 | 1 | 0 | 0 | 1 | 0 | 0 | 5 | 11 | 11 | 13.6 | 14 | | | | | |
| Oddar Meanchey | 0 | 1 | 1 | 0 | 1 | 0 | 0 | 1 | 0 | 0 | 1 | 0 | 5 | 0 | 0 | 3 | 1 | 0 | 0 | 0 | 0 | 0 | 0 | 0 | 0 | 0 | 0 | 1 | 0 | 0 | 5 | 10 | 21 | 12.3 | 26 | | | | | |
| Banteay Meanchey | 0 | 0 | 0 | 0 | 3 | 0 | 1 | 0 | 0 | 1 | 0 | 0 | 5 | 0 | 2 | 0 | 0 | 1 | 1 | 0 | 0 | 1 | 0 | 0 | 0 | 0 | 0 | 0 | 0 | 0 | 5 | 10 | 31 | 12.3 | 38 | | | | | |
| Mondol Kiri | 0 | 0 | 0 | 0 | 0 | 0 | 0 | 0 | 0 | 0 | 0 | 0 | 0 | 0 | 0 | 0 | 6 | 0 | 0 | 0 | 0 | 0 | 0 | 0 | 0 | 0 | 0 | 0 | 0 | 0 | 6 | 6 | 37 | 7.4 | 46 | | | | | |
| Preah Vihear | 1 | 0 | 0 | 0 | 0 | 0 | 1 | 0 | 0 | 0 | 0 | 0 | 2 | 0 | 0 | 0 | 0 | 2 | 2 | 0 | 0 | 0 | 0 | 0 | 0 | 0 | 0 | 0 | 0 | 0 | 4 | 6 | 43 | 7.4 | 53 | | | | | |
| Kampot | 0 | 0 | 0 | 0 | 0 | 0 | 0 | 0 | 0 | 0 | 0 | 0 | 0 | 0 | 0 | 0 | 0 | 0 | 0 | 0 | 0 | 0 | 0 | 0 | 0 | 0 | 0 | 0 | 6 | 0 | 6 | 6 | 49 | 7.4 | 60 | | | | | |
| Pursat | 0 | 1 | 0 | 0 | 0 | 0 | 0 | 0 | 0 | 0 | 0 | 0 | 1 | 3 | 0 | 0 | 0 | 0 | 0 | 1 | 0 | 0 | 0 | 0 | 0 | 0 | 0 | 0 | 0 | 0 | 4 | 5 | 54 | 6.2 | 67 | | | | | |
| Kampong Thom | 1 | 0 | 0 | 0 | 0 | 0 | 0 | 0 | 0 | 0 | 0 | 0 | 1 | 0 | 0 | 0 | 4 | 0 | 0 | 0 | 0 | 0 | 0 | 0 | 0 | 0 | 0 | 0 | 0 | 0 | 4 | 5 | 59 | 6.2 | 73 | | | | | |
| Kampong Chhnang | 0 | 0 | 0 | 0 | 1 | 0 | 0 | 0 | 0 | 0 | 0 | 0 | 1 | 0 | 0 | 0 | 0 | 4 | 0 | 0 | 0 | 0 | 0 | 0 | 0 | 0 | 0 | 0 | 0 | 0 | 4 | 5 | 64 | 6.2 | 79 | | | | | |
| Tboung Khmum | 0 | 0 | 0 | 0 | 0 | 2 | 0 | 0 | 0 | 1 | 0 | 0 | 3 | 0 | 0 | 0 | 0 | 0 | 0 | 1 | 1 | 0 | 0 | 0 | 0 | 0 | 0 | 0 | 0 | 0 | 2 | 5 | 69 | 6.2 | 85 | | | | | |
| Rotanak Kiri | 0 | 3 | 0 | 0 | 0 | 0 | 0 | 1 | 0 | 0 | 0 | 0 | 4 | 0 | 0 | 0 | 0 | 0 | 0 | 0 | 0 | 0 | 0 | 0 | 0 | 0 | 0 | 0 | 0 | 0 | 4 | 73 | 4.9 | 90 | | | | | | |
| Koh Kong | 0 | 0 | 0 | 0 | 0 | 0 | 0 | 0 | 0 | 0 | 0 | 0 | 0 | 0 | 0 | 0 | 0 | 0 | 0 | 0 | 0 | 0 | 0 | 0 | 0 | 0 | 0 | 0 | 2 | 2 | 2 | 75 | 2.5 | 93 | | | | | | |
| Siemreap | 0 | 0 | 2 | 0 | 0 | 0 | 0 | 0 | 0 | 0 | 0 | 0 | 2 | 0 | 0 | 0 | 0 | 0 | 0 | 0 | 0 | 0 | 0 | 0 | 0 | 0 | 0 | 0 | 0 | 0 | 2 | 77 | 2.5 | 95 | | | | | | |
| Preah Sihanouk | 0 | 0 | 0 | 0 | 0 | 0 | 0 | 0 | 0 | 0 | 0 | 0 | 0 | 0 | 0 | 0 | 1 | 0 | 0 | 0 | 0 | 0 | 0 | 0 | 0 | 0 | 0 | 0 | 0 | 0 | 1 | 1 | 78 | 1.2 | 96 | | | | | |
| Takeo | 1 | 0 | 0 | 0 | 0 | 0 | 0 | 0 | 0 | 0 | 0 | 0 | 1 | 0 | 0 | 0 | 0 | 0 | 0 | 0 | 0 | 0 | 0 | 0 | 0 | 0 | 0 | 0 | 0 | 0 | 1 | 79 | 1.2 | 98 | | | | | | |
| Kratie | 0 | 0 | 1 | 0 | 0 | 0 | 0 | 0 | 0 | 0 | 0 | 0 | 1 | 0 | 0 | 0 | 0 | 0 | 0 | 0 | 0 | 0 | 0 | 0 | 0 | 0 | 0 | 0 | 0 | 0 | 1 | 80 | 1.2 | 99 | | | | | | |
| Pailin | 0 | 0 | 0 | 0 | 0 | 0 | 0 | 0 | 0 | 0 | 0 | 0 | 0 | 0 | 0 | 0 | 0 | 0 | 0 | 1 | 0 | 0 | 0 | 0 | 0 | 0 | 0 | 0 | 0 | 1 | 1 | 81 | 1.2 | 100 | | | | | | |
| Kampong Speu | 0 | 0 | 0 | 0 | 0 | 0 | 0 | 0 | 0 | 0 | 0 | 0 | 0 | 0 | 0 | 0 | 0 | 0 | 0 | 0 | 0 | 0 | 0 | 0 | 0 | 0 | 0 | 0 | 0 | 0 | 0 | 0 | 81 | 0 | 100 | | | | | |
| Kampong Cham | 0 | 0 | 0 | 0 | 0 | 0 | 0 | 0 | 0 | 0 | 0 | 0 | 0 | 0 | 0 | 0 | 0 | 0 | 0 | 0 | 0 | 0 | 0 | 0 | 0 | 0 | 0 | 0 | 0 | 0 | 0 | 0 | 81 | 0 | 100 | | | | | |
| Kandal | 0 | 0 | 0 | 0 | 0 | 0 | 0 | 0 | 0 | 0 | 0 | 0 | 0 | 0 | 0 | 0 | 0 | 0 | 0 | 0 | 0 | 0 | 0 | 0 | 0 | 0 | 0 | 0 | 0 | 0 | 0 | 0 | 81 | 0 | 100 | | | | | |
| Prey Veng | 0 | 0 | 0 | 0 | 0 | 0 | 0 | 0 | 0 | 0 | 0 | 0 | 0 | 0 | 0 | 0 | 0 | 0 | 0 | 0 | 0 | 0 | 0 | 0 | 0 | 0 | 0 | 0 | 0 | 0 | 0 | 0 | 81 | 0 | 100 | | | | | |
| Stung Treng | 0 | 0 | 0 | 0 | 0 | 0 | 0 | 0 | 0 | 0 | 0 | 0 | 0 | 0 | 0 | 0 | 0 | 0 | 0 | 0 | 0 | 0 | 0 | 0 | 0 | 0 | 0 | 0 | 0 | 0 | 0 | 0 | 81 | 0 | 100 | | | | | |
| Svay Rieng | 0 | 0 | 0 | 0 | 0 | 0 | 0 | 0 | 0 | 0 | 0 | 0 | 0 | 0 | 0 | 0 | 0 | 0 | 0 | 0 | 0 | 0 | 0 | 0 | 0 | 0 | 0 | 0 | 0 | 0 | 0 | 0 | 81 | 0 | 100 | | | | | |
| Kep | 0 | 0 | 0 | 0 | 0 | 0 | 0 | 0 | 0 | 0 | 0 | 0 | 0 | 0 | 0 | 0 | 0 | 0 | 0 | 0 | 0 | 0 | 0 | 0 | 0 | 0 | 0 | 0 | 0 | 0 | 0 | 0 | 81 | 0 | 100 | | | | | |
| Phnom Penh | 0 | 0 | 0 | 0 | 0 | 0 | 0 | 0 | 0 | 0 | 0 | 0 | 0 | 0 | 0 | 0 | 0 | 0 | 0 | 0 | 0 | 0 | 0 | 0 | 0 | 0 | 0 | 0 | 0 | 0 | 0 | 0 | 81 | 0 | 100 | | | | | |
| TOTAL | 3 | 5 | 4 | 0 | 7 | 2 | 2 | 3 | 1 | 2 | 1 | 2 | 32 | 3 | 3 | 5 | 12 | 7 | 5 | 2 | 1 | 1 | 6 | 2 | 2 | 49 | 81 | | | | | | | | | | | | | |



5 Most Affected Provinces for Explosive Ordnance Casualties
Ranked by Total Casualties

Jan2023 - Dec2024

| Rank | Province | Mine Casualties | ERW Casualties | Total Casualties | Cumulative Total |
|------|------------------|-----------------|----------------|------------------|------------------|
| 1 | Battambang | 9 | 2 | 11 | 11 |
| 2 | Banteay Meanchey | 8 | 2 | 10 | 21 |
| 3 | Oddar Meanchey | 9 | 1 | 10 | 31 |
| 4 | Kampot | 0 | 6 | 6 | 37 |
| 5 | Mondol Kiri | 0 | 6 | 6 | 43 |

10 Most Affected Districts for Explosive Ordnance Casualties
Ranked by Total Casualties

Jan2023 - Dec2024

| Rank | District | Province | Mine Casualties | ERW Casualties | Total Casualties | Cumulative Total |
|------|---------------|------------------|-----------------|----------------|------------------|------------------|
| 1 | Saen Monourom | Mondol Kiri | 0 | 6 | 6 | 6 |
| 2 | Samlout | Battambang | 6 | 0 | 6 | 12 |
| 3 | Banteay Meas | Kampot | 0 | 6 | 6 | 18 |
| 4 | Anlong Veang | Oddar Meanchey | 5 | 1 | 6 | 24 |
| 5 | Choam Khsant | Preah Vihear | 5 | 1 | 6 | 30 |
| 6 | Veal Veang | Pursat | 5 | 0 | 5 | 35 |
| 7 | Ou Chrov | Banteay Meanchey | 4 | 0 | 4 | 39 |
| 8 | Baribour | Kampong Chhnang | 0 | 4 | 4 | 43 |
| 9 | Stoung | Kampong Thom | 0 | 4 | 4 | 47 |
| 10 | Ou Ya Dav | Rotanak Kiri | 1 | 3 | 4 | 51 |

10 Most Affected Communes for Explosive Ordnance Casualties
Ranked by Total Casualties

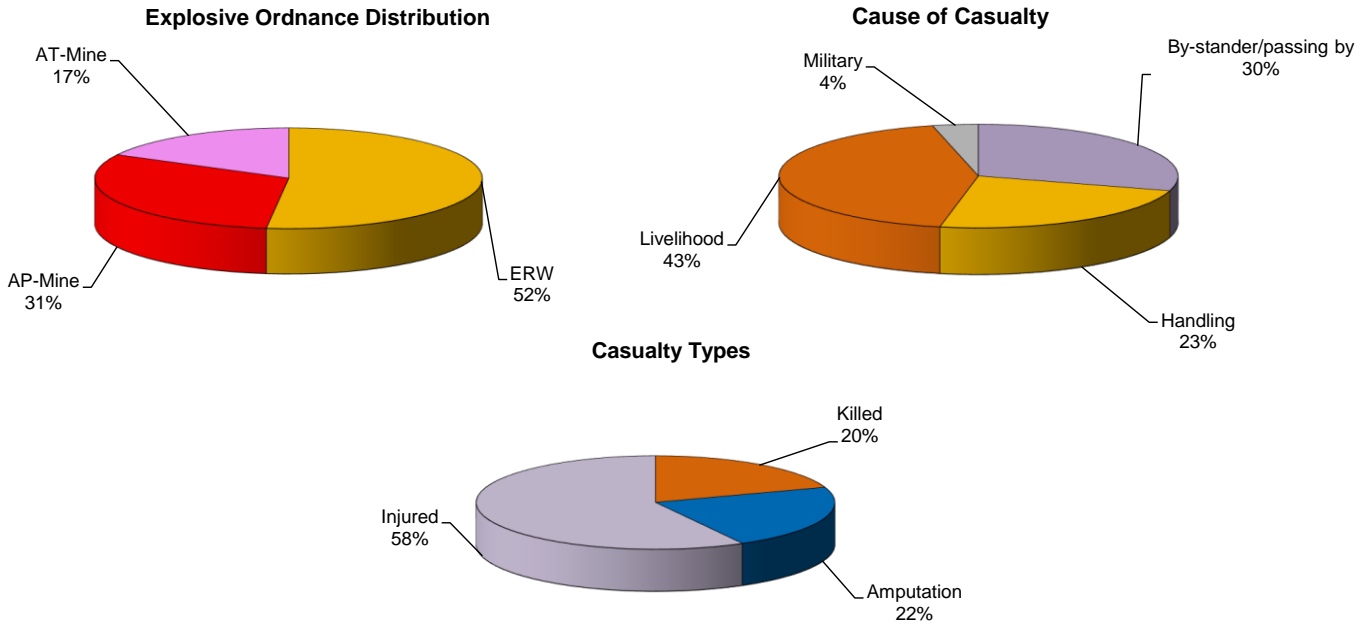
Jan2023 - Dec2024

| Rank | Commune | District | Province | Mine Casualties | ERW Casualties | Total Casualties | Cum. Total |
|------|---------------------|---------------|------------------|-----------------|----------------|------------------|------------|
| 1 | Tuk Meas Khang Lech | Banteay Meas | Kampot | 0 | 6 | 6 | 6 |
| 2 | Trapeang Prei | Anlong Veang | Oddar Meanchey | 5 | 1 | 6 | 12 |
| 3 | Romonea | Saen Monourom | Mondol Kiri | 0 | 6 | 6 | 18 |
| 4 | Ou Bei Choan | Ou Chrov | Banteay Meanchey | 4 | 0 | 4 | 22 |
| 5 | Chhnok Tru | Baribour | Kampong Chhnang | 0 | 4 | 4 | 26 |
| 6 | Thma Da | Veal Veang | Pursat | 4 | 0 | 4 | 30 |
| 7 | Rung Roeang | Stoung | Kampong Thom | 0 | 4 | 4 | 34 |
| 8 | Ya Tung | Ou Ya Dav | Rotanak Kiri | 0 | 3 | 3 | 37 |
| 9 | Kouk Romiet | Thma Puok | Banteay Meanchey | 3 | 0 | 3 | 40 |
| 10 | Bak Khlang | Mondol Seima | Koh Kong | 0 | 2 | 2 | 42 |

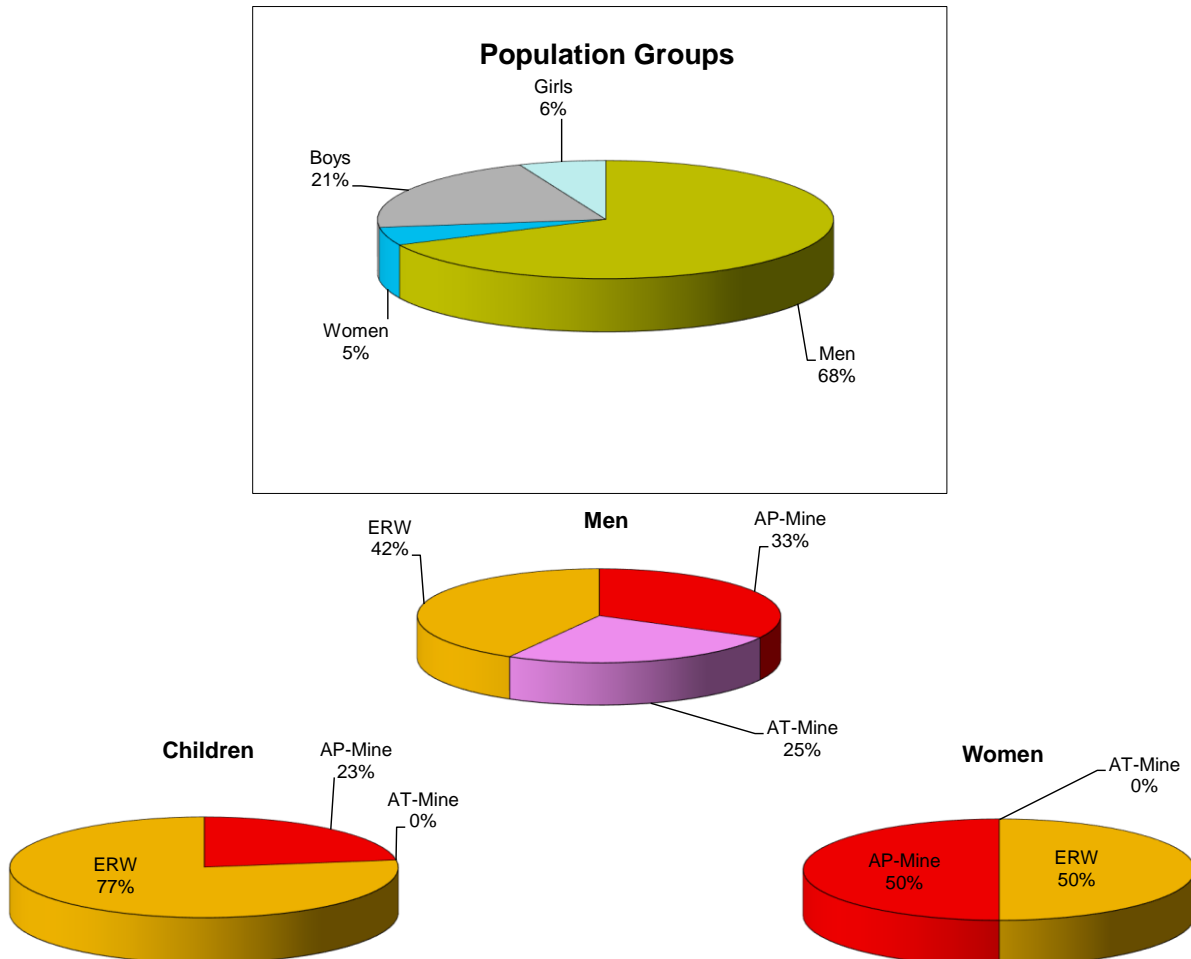
OVERVIEW OF EXPLOSIVE ORDNANCE ACCIDENTS

Jan2023 - Dec2024

Total Number of Casualties during Reporting Period: 81



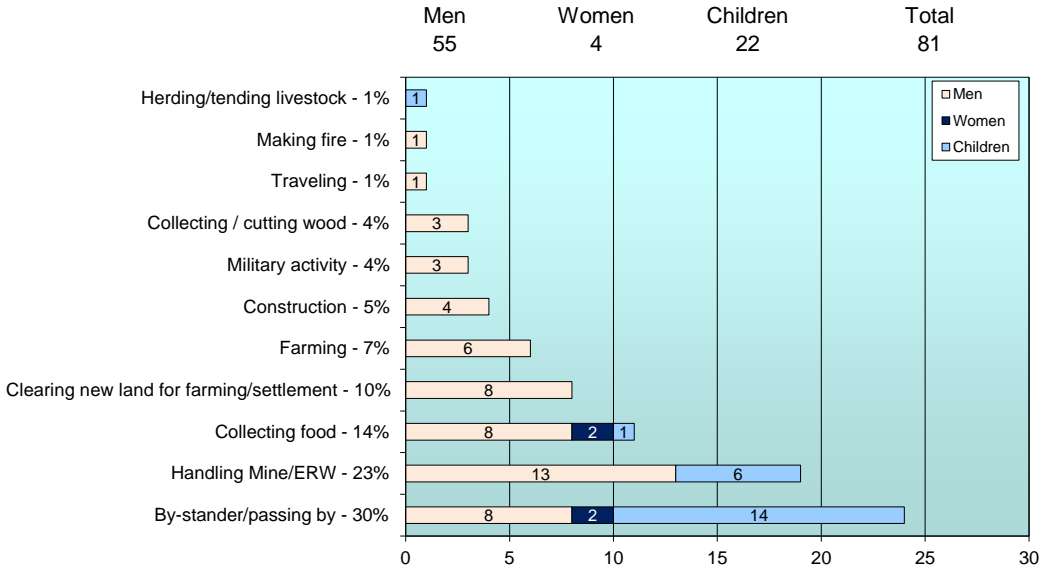
EXPLOSIVE ORDNANCE ACCIDENT OVERVIEW



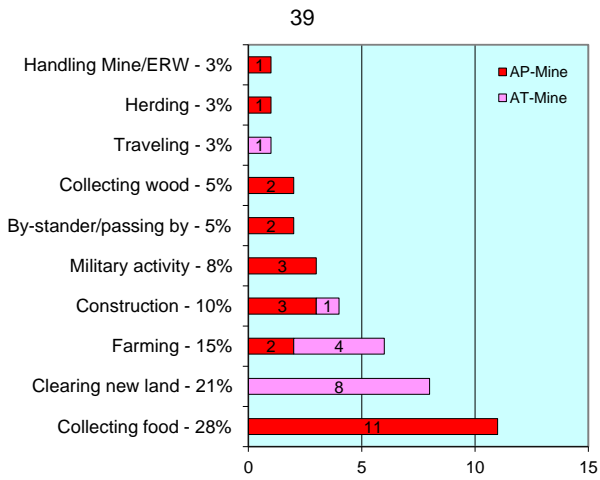
Jan2023 - Dec2024

Number of accidents during Reporting Period: **81**

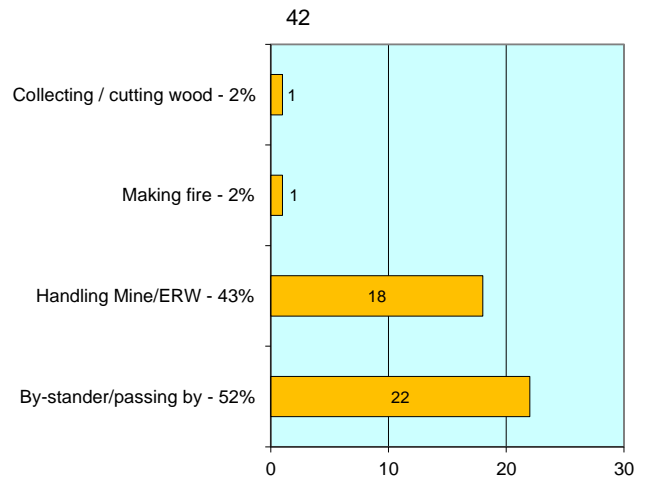
Cause of Accident by Total Population Group



Activities - Mines

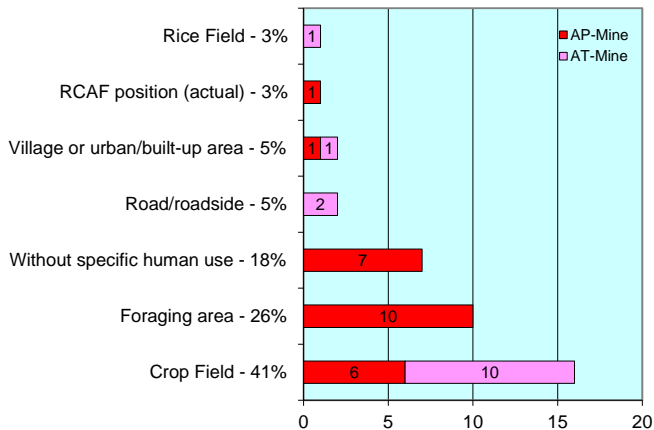


Activities - ERW



Explosive Ordnance Accidents by Terrain Type

Terrain - Mines



Terrain - ERW

